



## GL243002

### 4 Channels Gigabit Transformers

#### Feature :

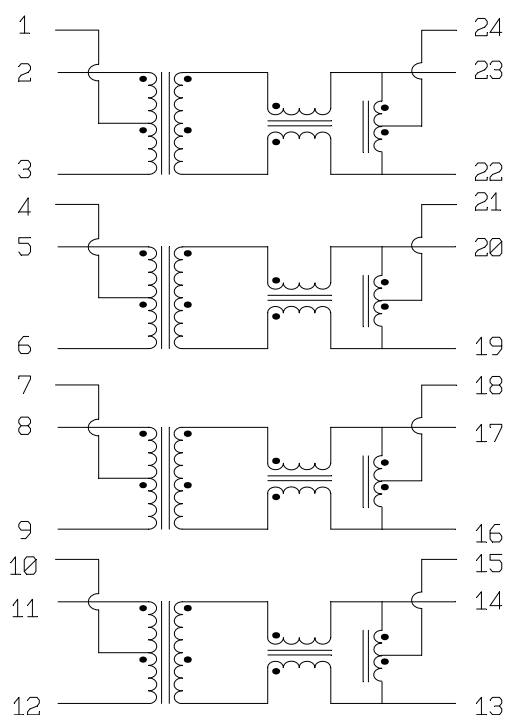
- ◆ Designed to meet IEEE802.3ab requirement.
- ◆ Turn ratio 1:1 on transmitter side.
- ◆ Primary inductance 350mH min. with 8mA DC Bias.
- ◆ Designed to meet IR 245<sup>0</sup>C~250<sup>0</sup>C peak requirement.

#### Specifications : @ 25<sup>0</sup>C

Parameter	Condition	Min.	Typ.	Max.	Unit
Inductance *Note 1	@100KHz,100mV	350			μH
Turn Ratio			1CT:1CT		±5%
Insertion Loss	@1-100MHz			-1.0	dB
Return loss	@1-30MHz	-18			dB
	@40MHz	-18			dB
	@50MHz	-16			dB
	@30MHz	-12			dB
Cross talk	@1-60MHz	-45			dB
	@60MHz	-40			dB
	@100MHz	-35			dB
Differential to Common Mode Rejection	@30MHz	-43			dB
	@60MHz	-37			dB
	@100MHz	-33			dB
Voltage isolation			1500		v <sub>rms</sub>

Note 1 : measured at 8mA<sub>dc</sub> over operating temperature 0<sup>0</sup>C -70<sup>0</sup>C

#### Schematic:

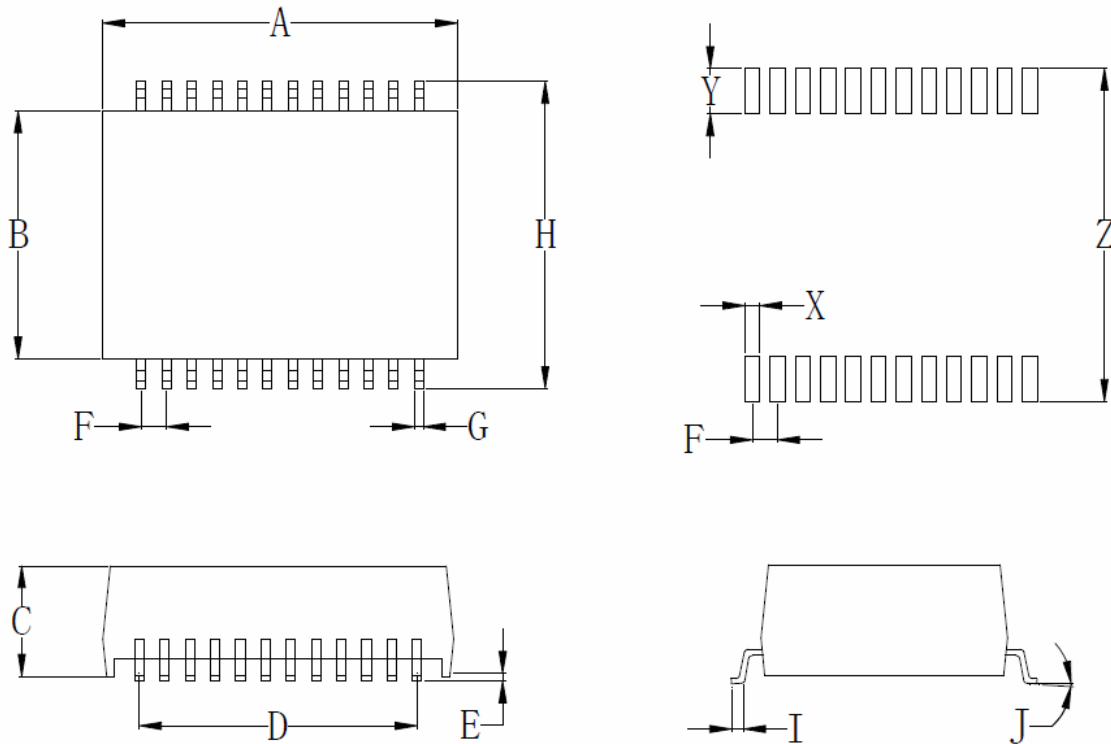


# GL243002

## 4 Channels Gigabit Transformers



### Dimension:



DIM	MILLIMETERS		INCHES	
	MIN	MAX	MIN	MAX
A	17.30	18.30	0.699	0.720
B	11.70	12.70	0.461	0.500
C	6.80(max)		0.268(max)	
D	13.97(typical)		0.550(typical)	
E	0.15	0.45	0.006	0.018
F	1.27(typical)		0.050(typical)	
G	0.46(typical)		0.018(typical)	
H	15.50	16.50	0.610	0.650
I	0	8	0	8
J	0.90	1.40	0.035	0.055
X	0.76(typical)		0.030(typical)	
Y	2.29(typical)		0.090(typical)	
Z	16.76(typical)		0.660(typical)	